

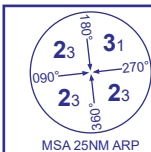
INSTRUMENT APPROACH CHART - ICAO

BARRA

RNP

RWY 15

(ACFT CAT A,B)



AFIS 118.080

BARRA INFORMATION

AD ELEVATION

5

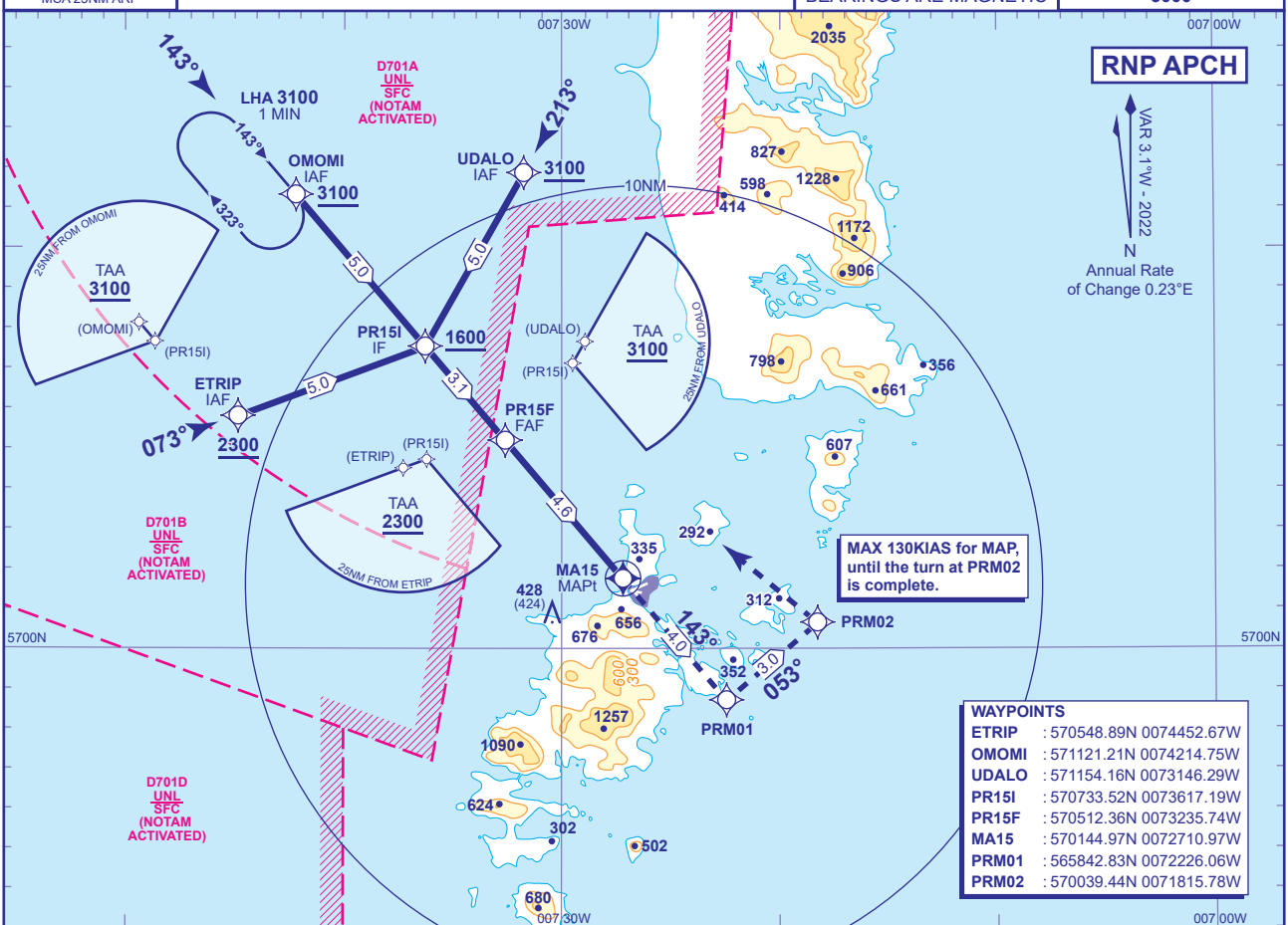
THR ELEVATION

4

OBSTACLE ELEVATION

428 AMSL
(424) (ABOVE THR)

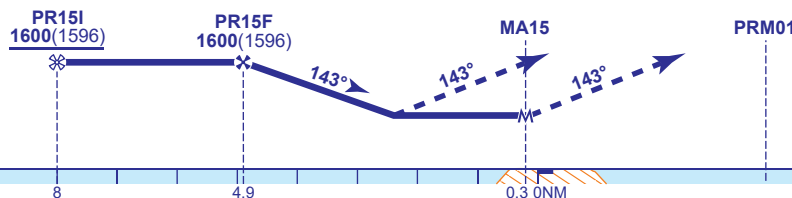
BEARINGS ARE MAGNETIC

TRANSITION ALTITUDE
3000

RECOMMENDED PROFILE Gradient 5.24%, 320FT/NM

NM to MA15	4	3
ALT(HGT)	1410(1406)	1090(1086)

TCH 40

MAPt (LNAV): MA15
(0.3NM before THR RWY 15)Continuous climb to 3100. Initially
climb straight ahead to PRM01,
then turn left to PRM02 and
OMOMI to join the hold.

Aircraft Category		A	B	Rate of descent	G/S KT	160	140	120	100	80
OCA (OCH)	LNAV	800(796)	800(796)		FT/MIN	850	740	640	530	420
VM(C)OCA (OCH AAL)		Not Authorised								
Total Area		North of RWYs 250°M clockwise to 160°M								
		810(805)	810(805)							

NOTE 1 High ground lies in the vicinity of the missed approach area. Do not depart from procedure unless in VMC.**2** Severe turbulence can occur when wind exceeds 30KTS at 2000 within the arc 160°T - 240°T.**3** Procedure interacts with Danger Areas EG D701A and D701B. Procedure not available when Danger areas are active.**4** Use of this RNP procedure is strictly PPR from the aerodrome operator.**5** Prior to commencing the procedure, pilots are to broadcast on AFIS 118.080 with flight details and intentions.

CHANGE (12/21): EGNOS AND LPV REMOVED. VM(C)OCA (OCH AAL).